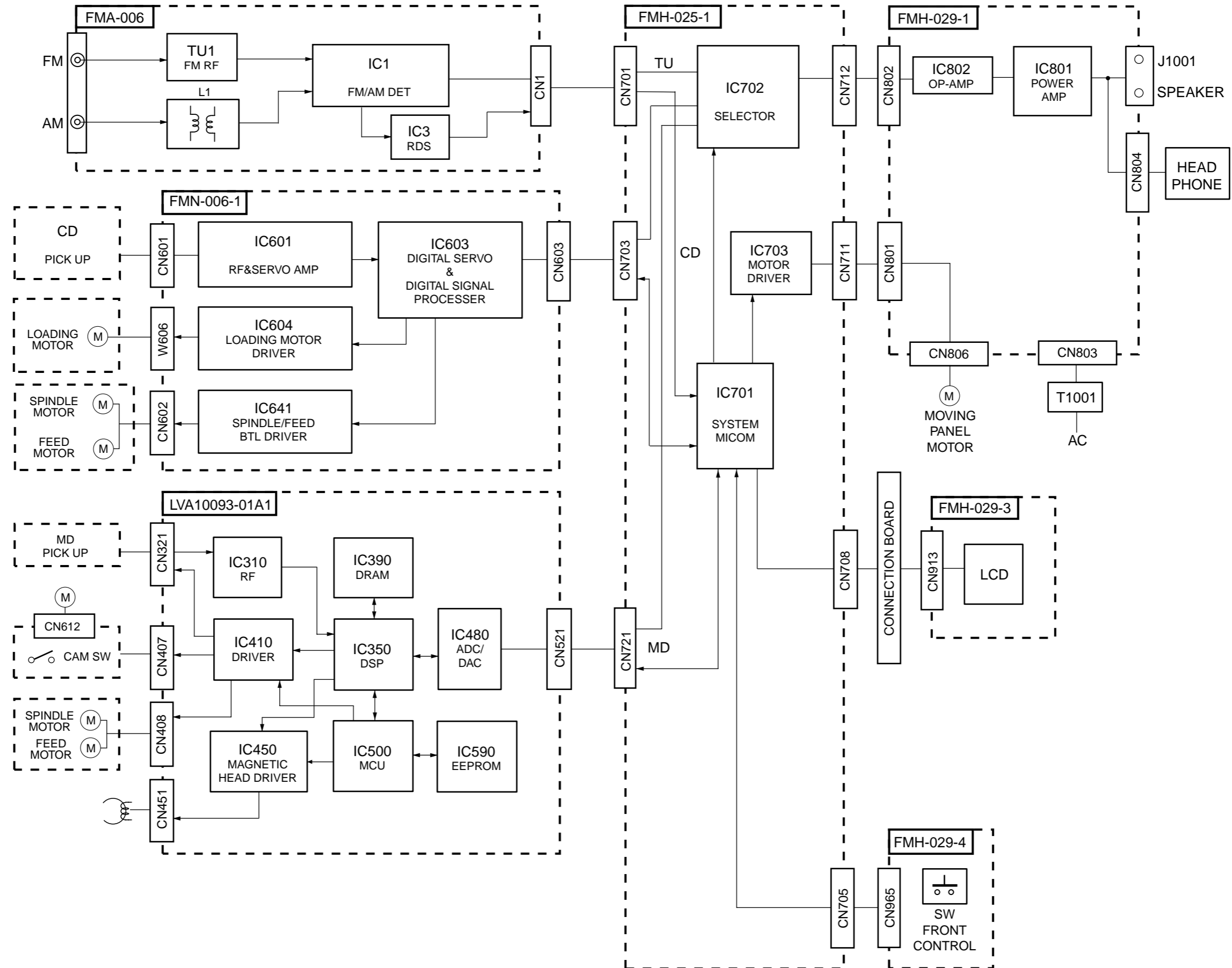
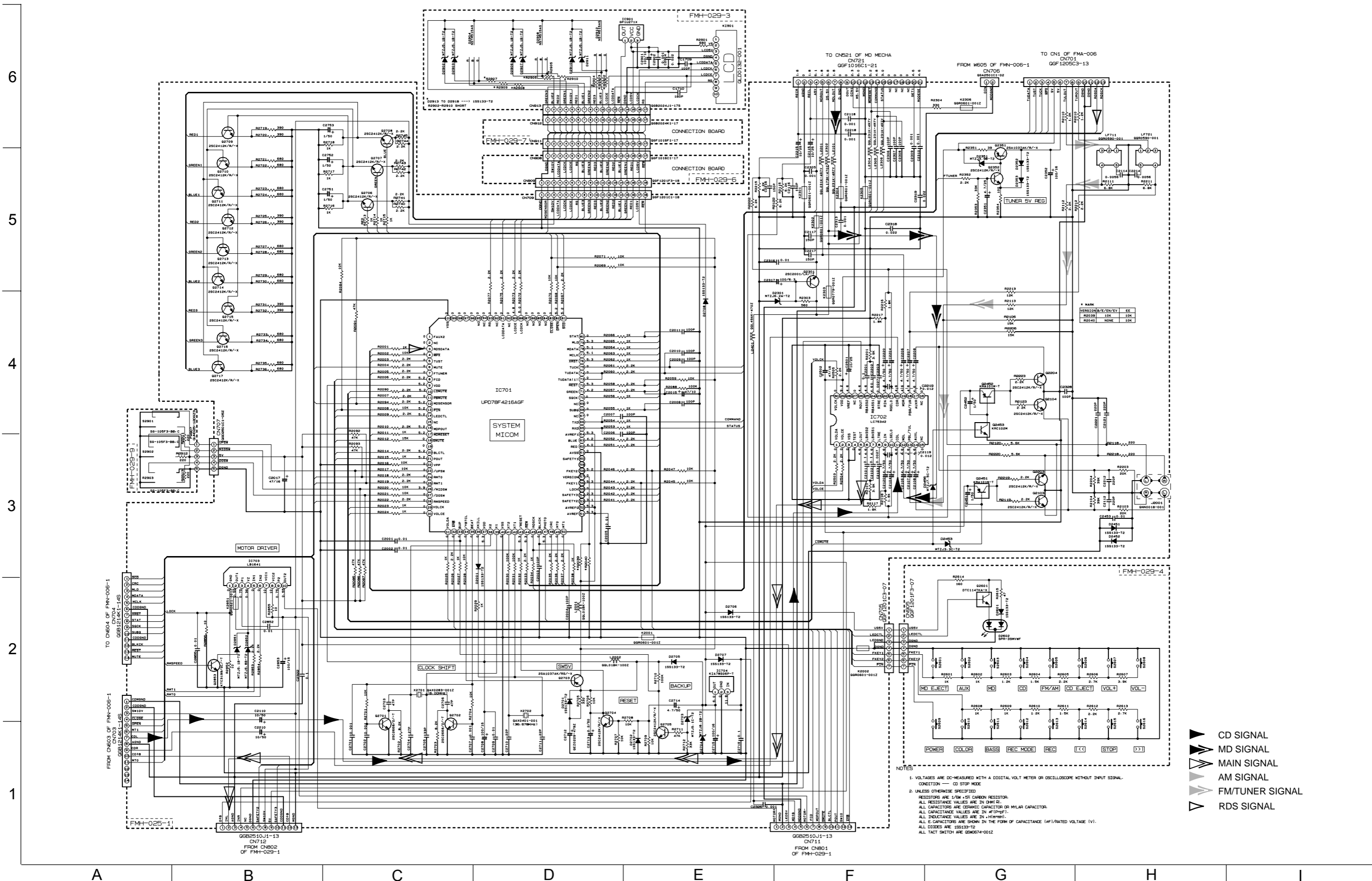


Block diagram

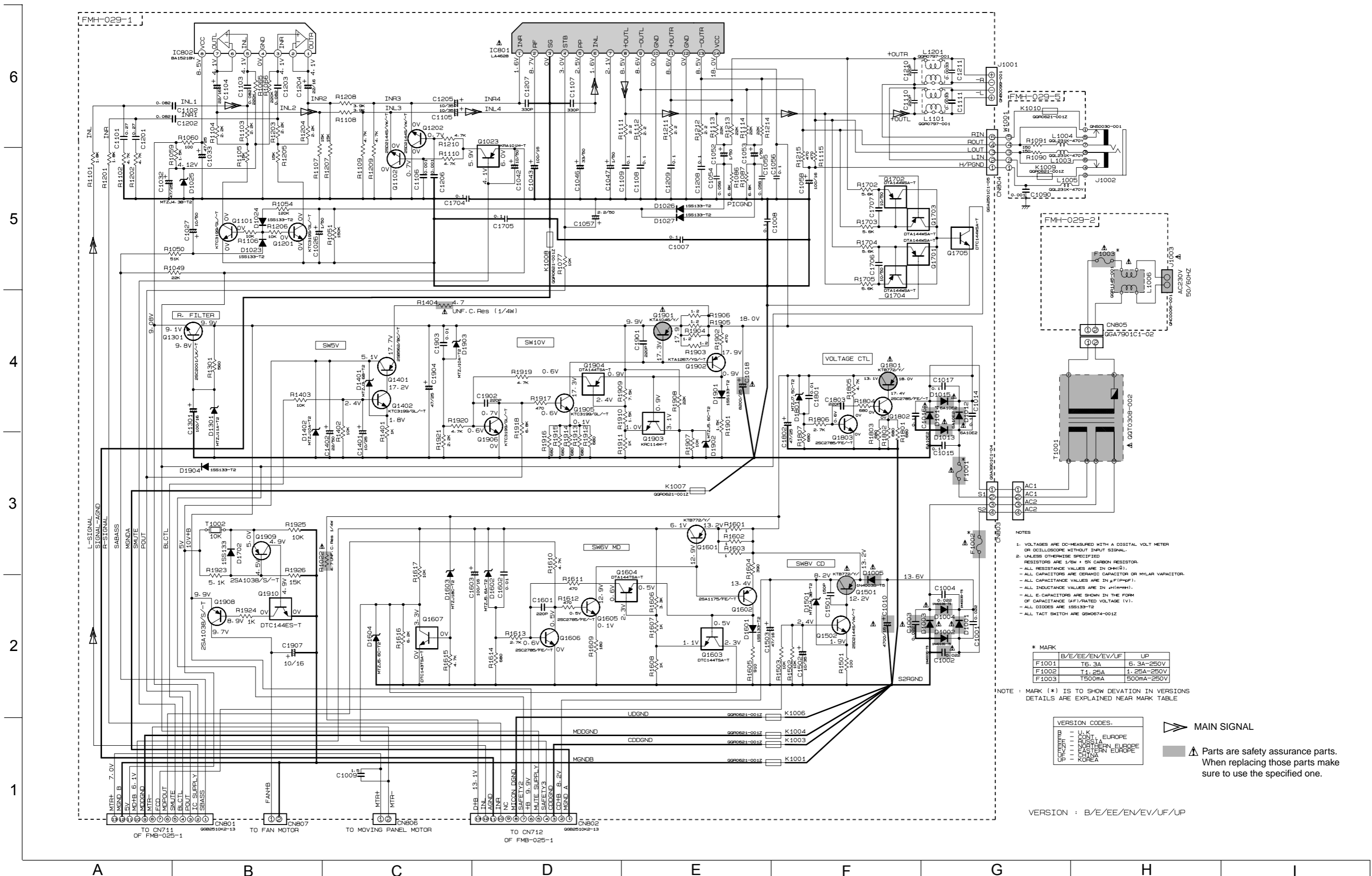


Standard schematic diagrams

■ Main & control circuit



Power amplifier & Power supply circuit



- NOTES
1. VOLTAGES ARE DC-MEASURED WITH A DIGITAL VOLT METER OR OSCILLOSCOPE WITHOUT INPUT SIGNAL.
 2. UNLESS OTHERWISE SPECIFIED:
 - ALL RESISTANCE VALUES ARE IN OHM(Ω).
 - ALL CAPACITORS ARE CERAMIC CAPACITOR OR MYLAR VAPACITOR.
 - ALL CAPACITANCE VALUES ARE IN μ F(μ FPF).
 - ALL INDUCTANCE VALUES ARE IN μ H(μ HPH).
 - ALL E-CAPACITORS ARE SHOWN IN THE FORM OF CAPACITANCE (μF)/RATED VOLTAGE (V).
 - ALL DIODES ARE 1SS133-T2
 - ALL TACT SWITCH ARE G9M0674-001Z

* MARK

| | B/E/EE/EN/UV/UF | UP |
|-------|-----------------|------------|
| F1001 | T6.3A | 6.3A-250V |
| F1002 | T1.25A | 1.25A-250V |
| F1003 | T500mA | 500mA-250V |

NOTE : MARK (*) IS TO SHOW DEVIATION IN VERSIONS DETAILS ARE EXPLAINED NEAR MARK TABLE

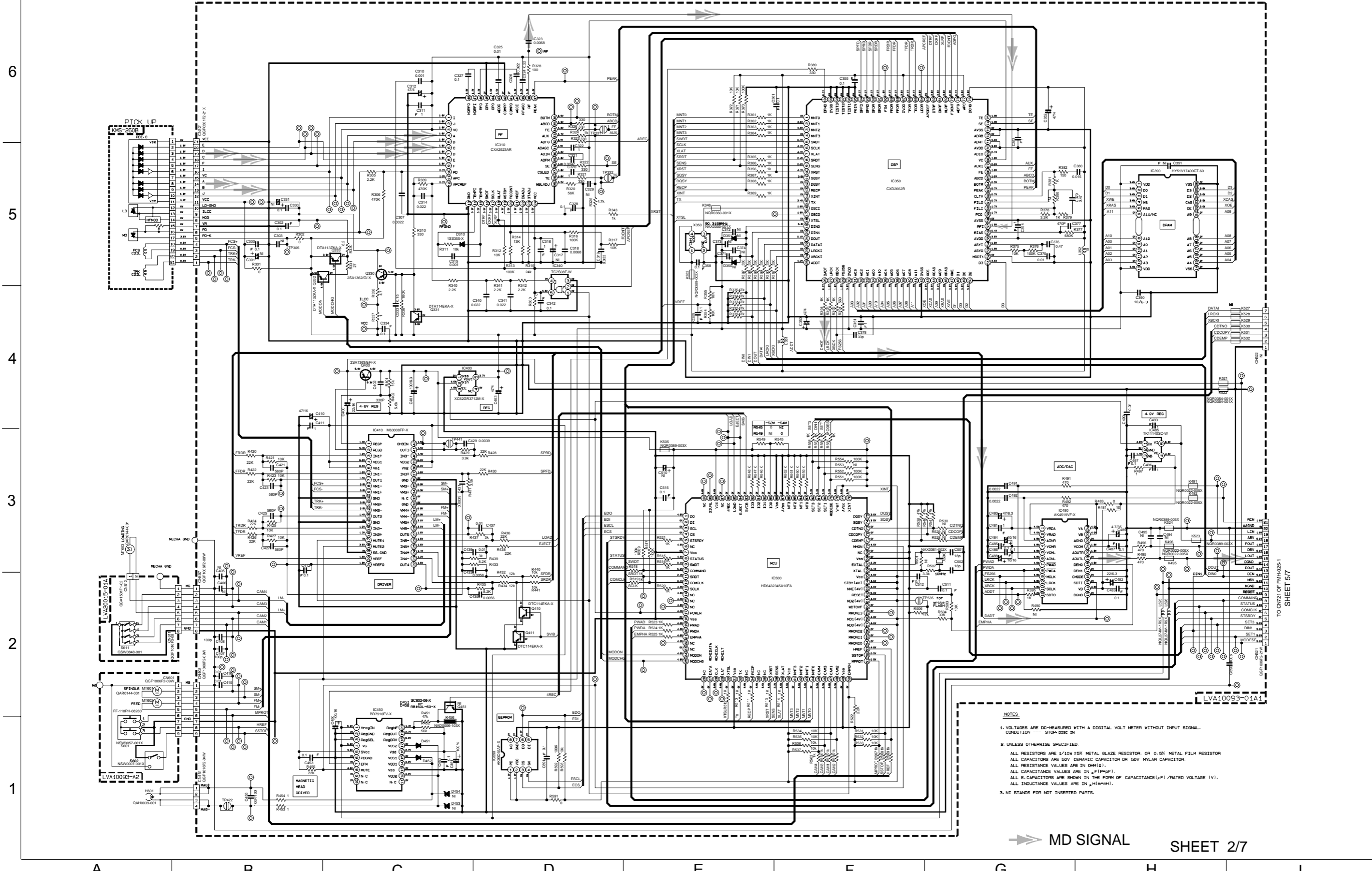
VERSION CODES.

| | |
|--------------|--------------|
| U.K. | U.K. |
| FRANCE | FRANCE |
| GERMANY | GERMANY |
| NETHERLANDS | NETHERLANDS |
| SCANDINAVIA | SCANDINAVIA |
| SPAIN | SPAIN |
| SWITZERLAND | SWITZERLAND |
| USA | USA |
| WEST GERMANY | WEST GERMANY |
| CHINA | CHINA |
| KOREA | KOREA |

MAIN SIGNAL
 Parts are safety assurance parts. When replacing those parts, make sure to use the specified one.

VERSION : B/E/EE/EN/UV/UF/UP

MD control circuit

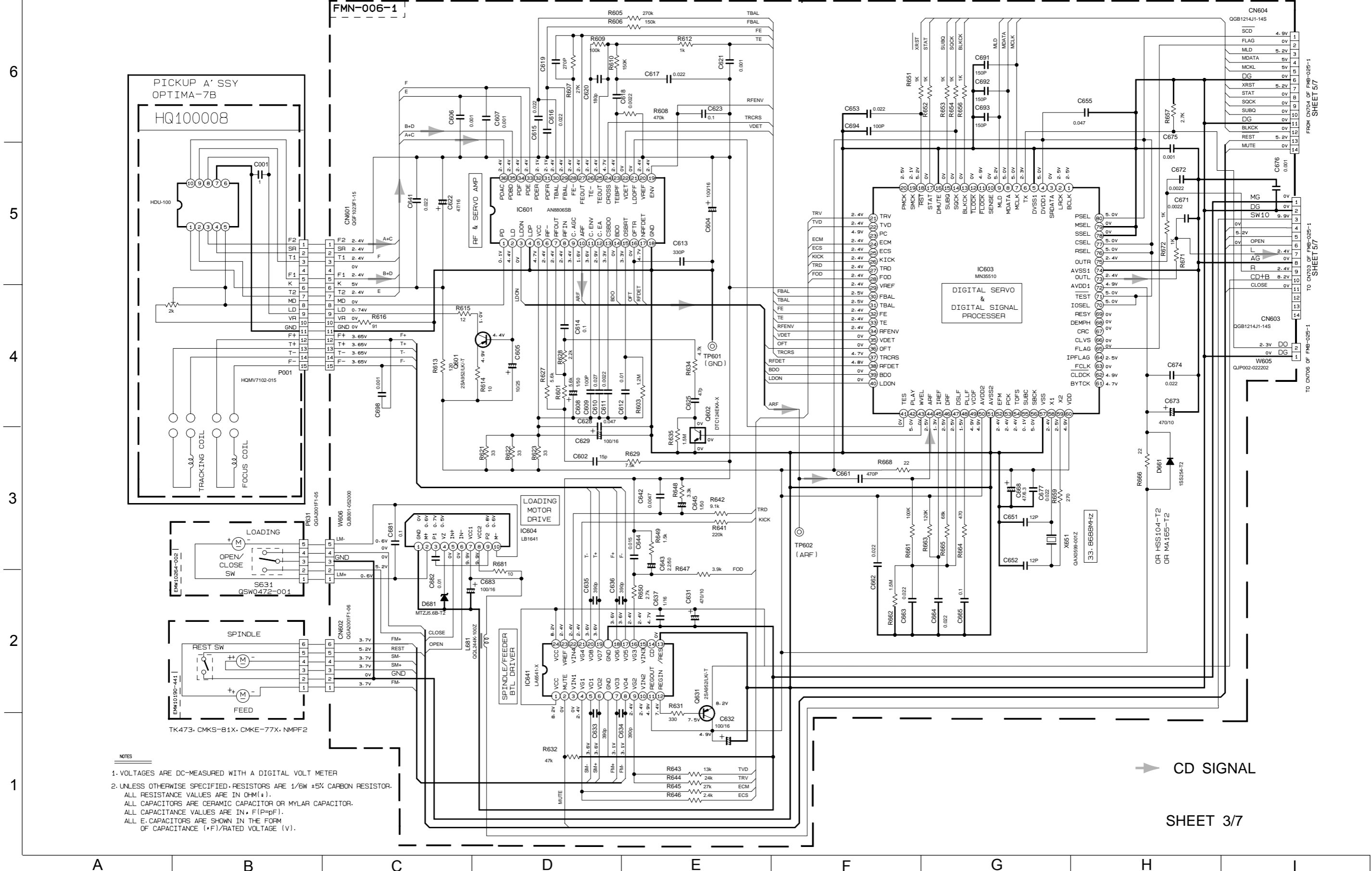


- NOTES**
1. VOLTAGES ARE DC-MEASURED WITH A DIGITAL VOLT METER WITHOUT INPUT SIGNAL. CONDITION — STOP-DISC IN.
 2. UNLESS OTHERWISE SPECIFIED:
ALL RESISTORS ARE 1/10W ±5% METAL GLAZE RESISTOR, OR 0.5% METAL FILM RESISTOR
ALL CAPACITORS ARE 50V CERAMIC CAPACITOR OR 50V NYLON CAPACITOR.
ALL RESISTANCE VALUES ARE IN OHM(S).
ALL CAPACITANCE VALUES ARE IN μF(PH+P).
ALL E-CAPACITORS ARE SHOWN IN THE FORM OF CAPACITANCE(μF)/RATED VOLTAGE (V).
ALL INDUCTANCE VALUES ARE IN μH(=MH).
 3. NI STANDS FOR NOT INSERTED PARTS.

➔ MD SIGNAL SHEET 2/7

TO CN721 OF RM4025-1
SHEET 5/7

CD control circuit



- NOTES
1. VOLTAGES ARE DC-MEASURED WITH A DIGITAL VOLT METER
 2. UNLESS OTHERWISE SPECIFIED, RESISTORS ARE 1/6W ±5% CARBON RESISTOR. ALL RESISTANCE VALUES ARE IN OHM(Ω).
 - ALL CAPACITORS ARE CERAMIC CAPACITOR OR MYLAR CAPACITOR. ALL CAPACITANCE VALUES ARE IN μF(P=pF).
 - ALL E-CAPACITORS ARE SHOWN IN THE FORM OF CAPACITANCE (μF)/RATED VOLTAGE (V).

SHEET 3/7

■ Tuner circuit (B/E/EN)

6

5

4

3

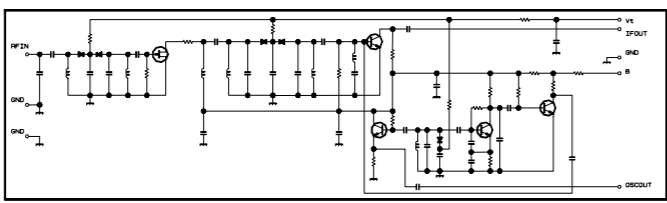
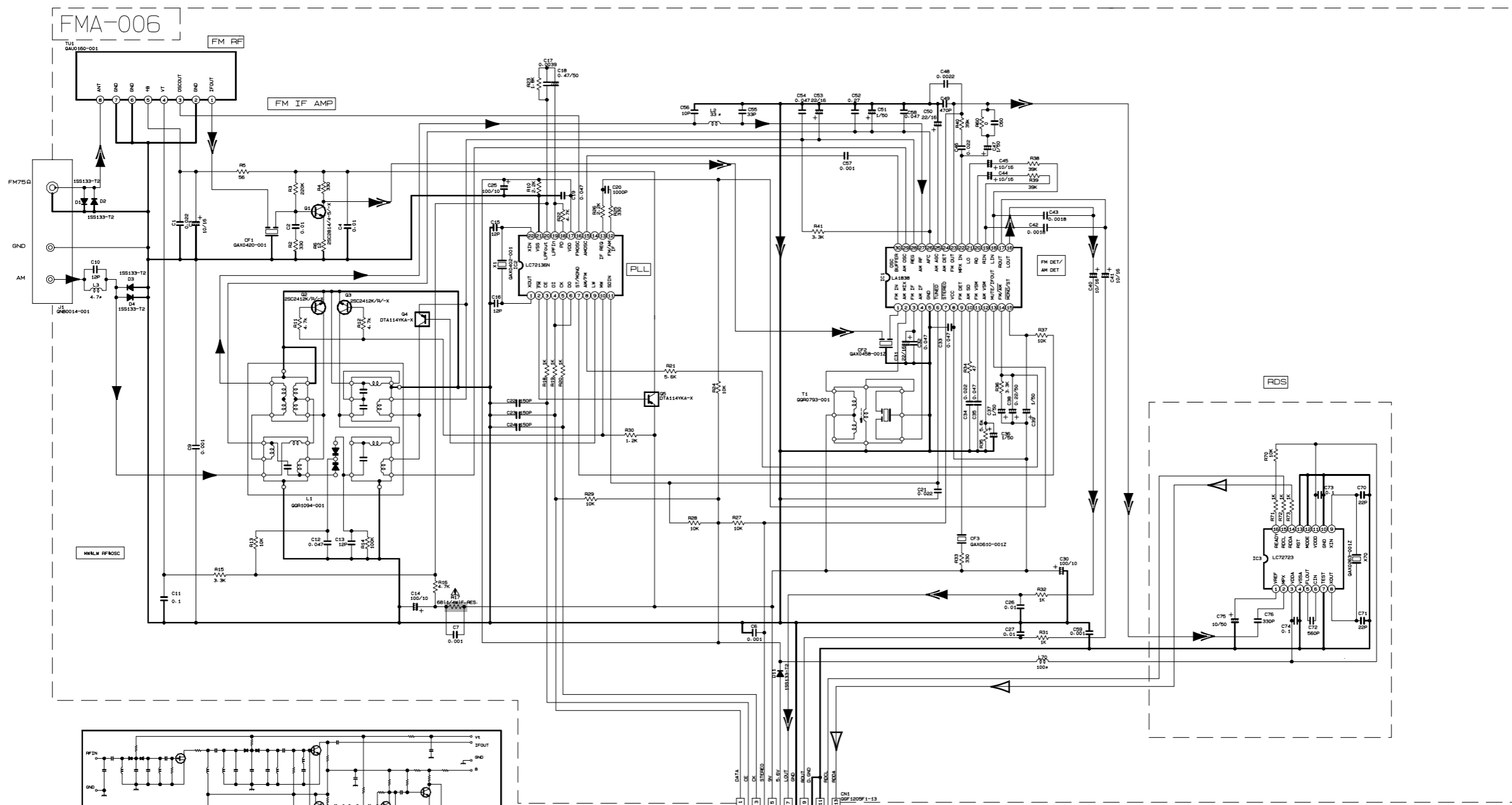
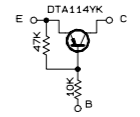
2

1

NOTES

- VOLTAGES ARE DC-MEASURED WITH A DIGITAL VOLTMETER.
- ALL RESISTORS ARE 1/8W ±5% METAL GLAZE RESISTOR.
- ALL RESISTANCE VALUES ARE IN Ω(M(k)).
- ALL CAPACITANCE VALUES ARE IN p(F)(p(F)).
- ALL E-CAPACITORS ARE SHOWN IN THE FORM OF CAPACITANCE (μF)/RATED VOLTAGE (V).
- SI DIODES (D) ARE ALL 1SS133-T THAT CAN BE CHANGED TO SIMILAR DIODE SUCH AS MA165 OR HSS104J.
- PARTS NO. OF TRANSISTORS ARE AS FOLLOWS:
Q1 2SC2814/4-5/-X Q2-Q3 2SC2412K/R/-X
Q4-Q5 DTA114YKA-X

B. INSIDE OF DIGITAL TRANSISTORS ARE SHOWN AS FOLLOWS.



| CONDITION | PIN NO. | 1 | 2 | 3 | 4 | 5 | 6 | 7 | 8 | 9 | 10 | 11 | 12 | 13 | 14 | 15 | 16 | 17 | 18 | 19 | 20 | 21 | 22 | 23 | 24 | 25 | 26 | 27 | 28 | 29 | 30 |
|-----------|----------------|-----|-----|-----|-----|-----|-----|-----|-----|-----|-----|-----|----|-----|-----|-----|-----|-----|-----|-----|-----|-----|-----|-----|-----|-----|-----|-----|-----|-----|-----|
| IC1 | FM NO SIGNAL | 3.6 | 8.9 | 3.6 | 3.6 | 0 | 5.0 | 5.0 | 8.9 | 8.9 | 1.3 | 0.1 | 0 | 0.9 | 7.8 | 7.8 | 4.3 | 4.3 | 4.3 | 4.3 | 3.4 | 3.4 | 2.8 | 3.4 | 0 | 0 | 3.5 | 3.5 | 3.6 | 3.6 | 2.7 |
| IC1 | FM 60dB STEREO | 3.6 | 8.9 | 3.6 | 3.6 | 0 | 5.0 | 5.0 | 8.9 | 8.9 | 1.3 | 4.3 | 0 | 0.9 | 7.8 | 7.8 | 4.3 | 4.3 | 4.3 | 4.3 | 3.4 | 3.4 | 2.8 | 3.4 | 0 | 0 | 3.6 | 3.6 | 3.6 | 3.6 | 2.7 |
| IC1 | AM NO SIGNAL | 3.5 | 9.0 | 3.5 | 3.5 | 0 | 5.0 | 5.1 | 9.0 | 2.6 | 1.3 | 0 | 0 | 0.9 | 4.7 | 5.5 | 4.3 | 4.3 | 4.3 | 4.3 | 3.3 | 3.2 | 2.8 | ust | 0.7 | 0.7 | 3.6 | 3.6 | 3.6 | 3.6 | 2.1 |
| IC2 | FM NO SIGNAL | 2.5 | 0 | 0 | 5.0 | 4.9 | 5.0 | 7.9 | 7.8 | 3.6 | 5.1 | 5.1 | 0 | 0 | 0 | 0 | 2.5 | 5.1 | 0.9 | 0.9 | 3.6 | 0 | 2.3 | | | | | | | | |

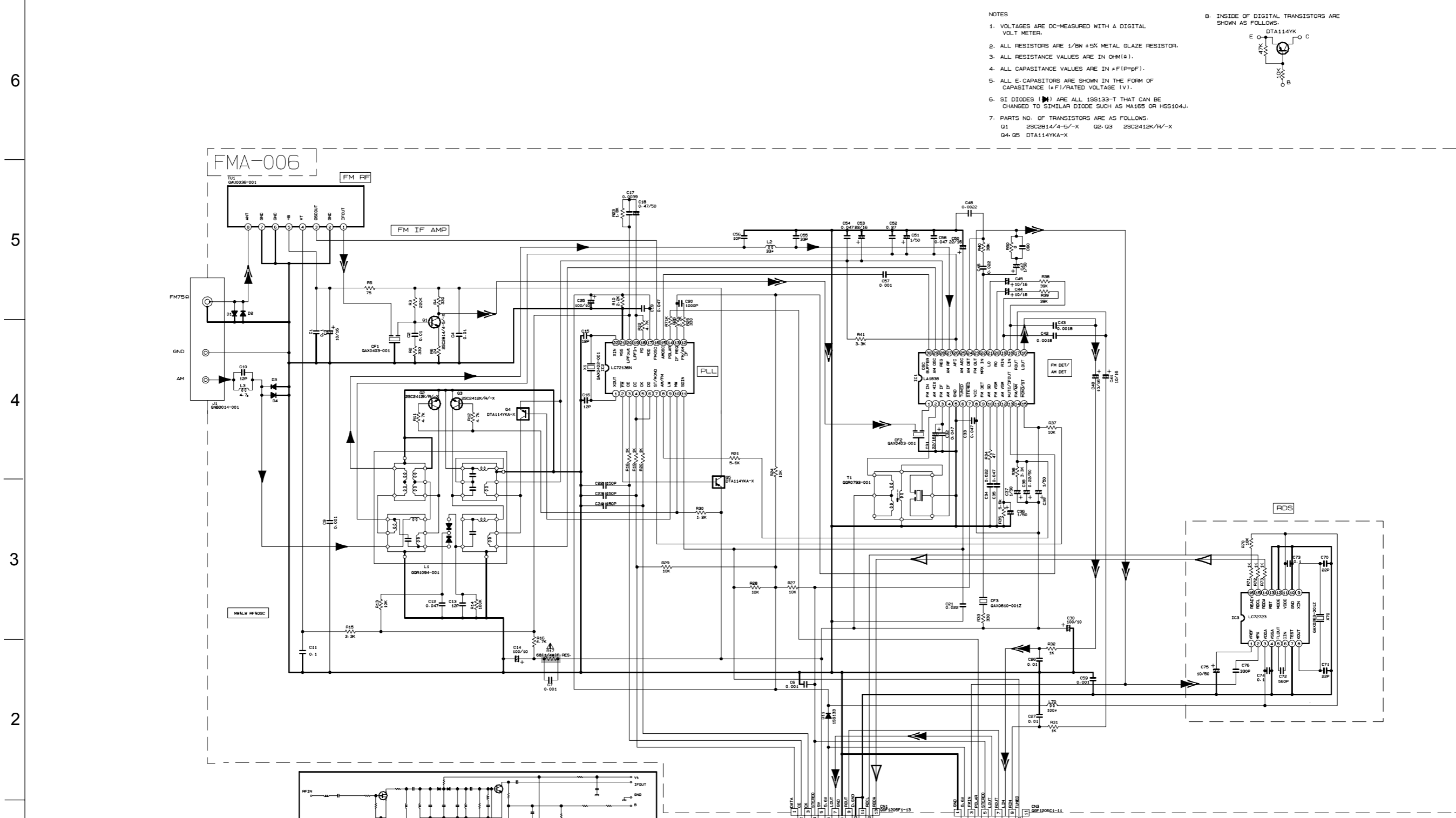
| Tr. NO. | PIN NO. | E | C | B | E | C | B |
|---------|----------------------|---|-----|------|-----|-----|-----|
| Q1 | FM 87.5MHz NO SIGNAL | 0 | 7.1 | 0.85 | 8.9 | 8.8 | 0 |
| Q1 | AM 52KHz NO SIGNAL | 0 | 0 | 9.0 | 0 | 8.9 | 0 |
| Tr. NO. | PIN NO. | E | C | B | E | C | B |
| Q2 | AM 52KHz NO SIGNAL | 0 | 0 | 0.7 | 0 | 0.7 | 0 |
| Q2 | AM 144KHz NO SIGNAL | 0 | 0 | 0.3 | 0 | 0.3 | 0.3 |

- ▶ AM SIGNAL
- ▶ FM/TUNER SIGNAL
- ▽ RDS SIGNAL

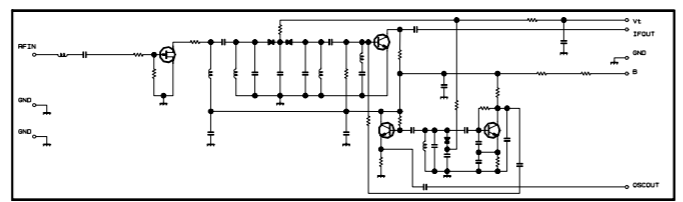
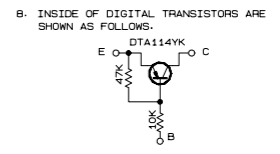
▲ Parts are safety assurance parts. When replacing those parts make sure to use the specified one.

A B C D E F G H I

■ Tuner circuit (EE)



- NOTES
- VOLTAGES ARE DC-MEASURED WITH A DIGITAL VOLT METER.
 - ALL RESISTORS ARE 1/8W ±5% METAL GLAZE RESISTOR.
 - ALL RESISTANCE VALUES ARE IN Ω(MΩ).
 - ALL CAPACITANCE VALUES ARE IN pF(μF).
 - ALL E-CAPACITORS ARE SHOWN IN THE FORM OF CAPACITANCE (μF)/RATED VOLTAGE (V).
 - SI DIODES (▷) ARE ALL 1SS133-T THAT CAN BE CHANGED TO SIMILAR DIODE SUCH AS MA165 OR H5S104J.
 - PARTS NO. OF TRANSISTORS ARE AS FOLLOWS.
Q1 2SC2814/4-S/-X Q2-Q3 2SC2412K/R/-X
Q4-Q5 DTA114YKA-X



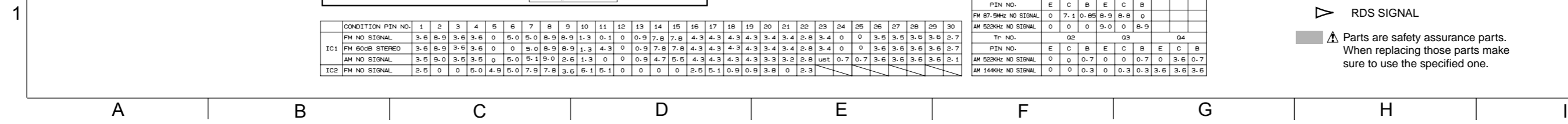
| CONDITION | PIN NO. | 1 | 2 | 3 | 4 | 5 | 6 | 7 | 8 | 9 | 10 | 11 | 12 | 13 | 14 | 15 | 16 | 17 | 18 | 19 | 20 | 21 | 22 | 23 | 24 | 25 | 26 | 27 | 28 | 29 | 30 |
|-----------|----------------|-----|-----|-----|-----|-----|-----|-----|-----|-----|-----|-----|----|-----|-----|-----|-----|-----|-----|-----|-----|-----|-----|-----|-----|-----|-----|-----|-----|-----|-----|
| IC1 | FM NO SIGNAL | 3.6 | 8.9 | 3.6 | 3.6 | 0 | 5.0 | 5.0 | 8.9 | 8.9 | 1.3 | 0.1 | 0 | 0.9 | 7.8 | 7.8 | 4.3 | 4.3 | 4.3 | 4.3 | 3.4 | 3.4 | 2.8 | 3.4 | 0 | 0 | 3.6 | 3.6 | 3.6 | 3.6 | 2.7 |
| | FM 60dB STEREO | 3.6 | 8.9 | 3.6 | 3.6 | 0 | 5.0 | 5.0 | 8.9 | 8.9 | 1.3 | 4.3 | 0 | 0.9 | 7.8 | 7.8 | 4.3 | 4.3 | 4.3 | 4.3 | 3.4 | 3.4 | 2.8 | 3.4 | 0 | 0 | 3.6 | 3.6 | 3.6 | 3.6 | 2.7 |
| | AM NO SIGNAL | 3.5 | 9.0 | 3.5 | 3.5 | 0 | 5.0 | 5.1 | 9.0 | 2.6 | 1.3 | 0 | 0 | 0.9 | 4.7 | 5.5 | 4.3 | 4.3 | 4.3 | 3.3 | 3.2 | 2.8 | ust | 0.7 | 0.7 | 3.6 | 3.6 | 3.6 | 3.6 | 2.1 | |
| IC2 | FM NO SIGNAL | 2.5 | 0 | 0 | 5.0 | 4.9 | 5.0 | 7.9 | 7.8 | 3.6 | 6.1 | 5.1 | 0 | 0 | 0 | 2.5 | 5.1 | 0.9 | 0.9 | 3.8 | 0 | 2.3 | | | | | | | | | |

| Tr. NO. | Q1 | Q5 |
|----------------------|-------------|-------------|
| PIN NO. | E C B E C B | E C B E C B |
| FM 87.5MHz NO SIGNAL | 0 7.1 0.85 | 8.9 8.8 0 |
| AM 520kHz NO SIGNAL | 0 0 0 9.0 | 0 8.9 |

| Tr. NO. | Q2 | Q3 | Q4 |
|---------------------|-------------------|-------------|-----------|
| PIN NO. | E C B E C B E C B | E C B E C B | E C B |
| FM 520kHz NO SIGNAL | 0 0 0 7.0 | 0 0 0 7.0 | 0 3.6 0.7 |
| AM 144kHz NO SIGNAL | 0 0 0 3.0 | 0 0 3.0 3.6 | 3.6 3.6 |

- ▶ AM SIGNAL
- ▶ FM/TUNER SIGNAL
- ▽ RDS SIGNAL

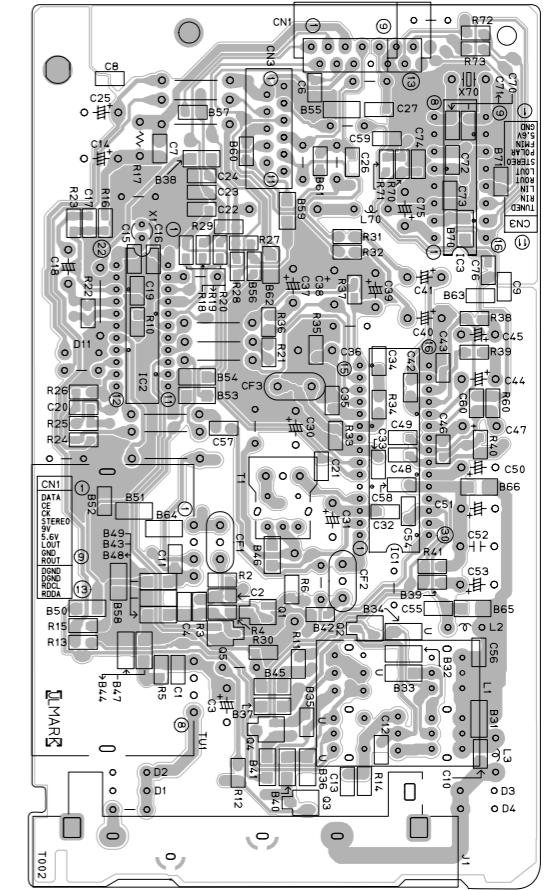
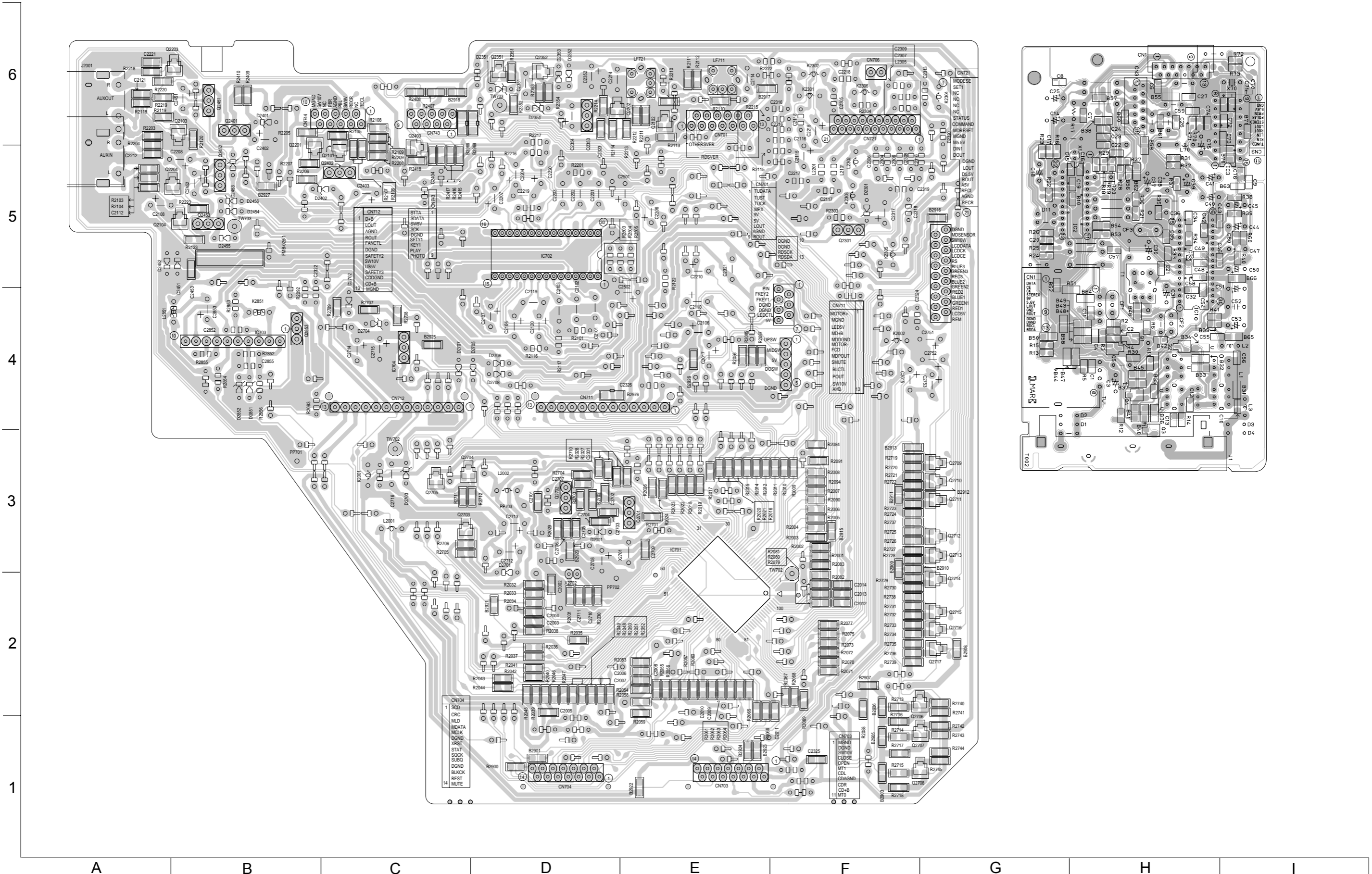
▲ Parts are safety assurance parts. When replacing those parts make sure to use the specified one.



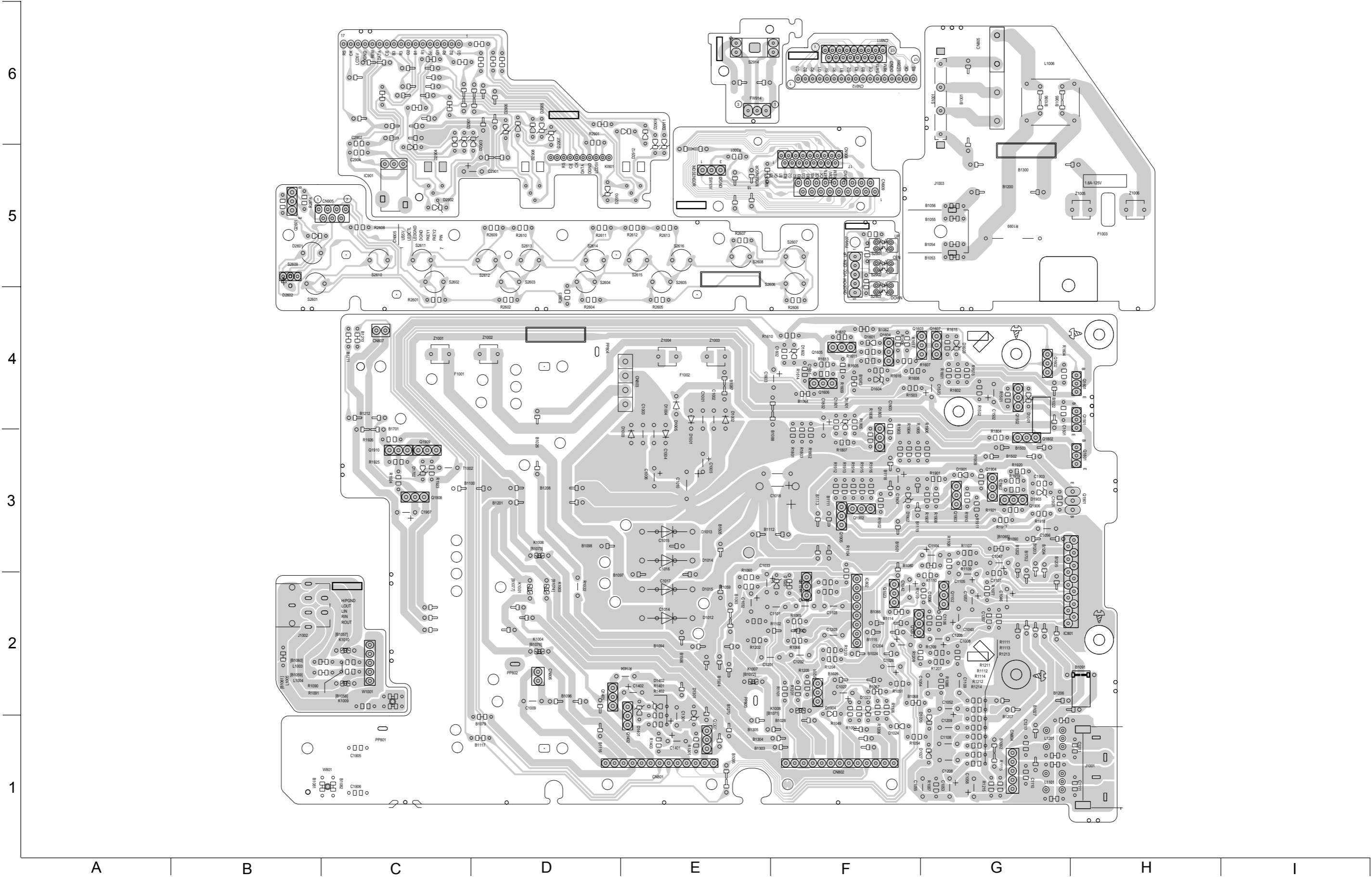
Printed circuit boards

■ Main board

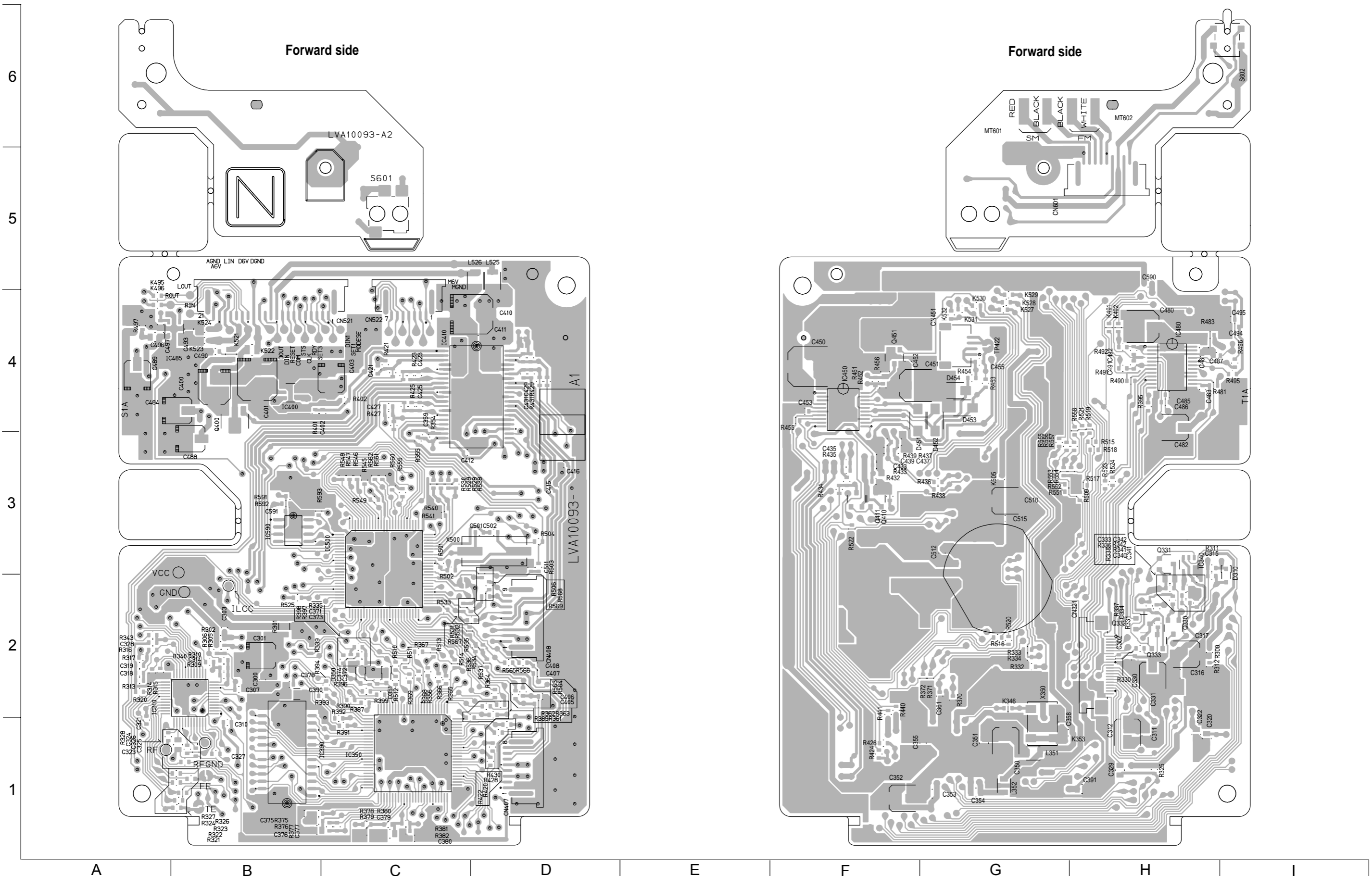
■ Tuner board



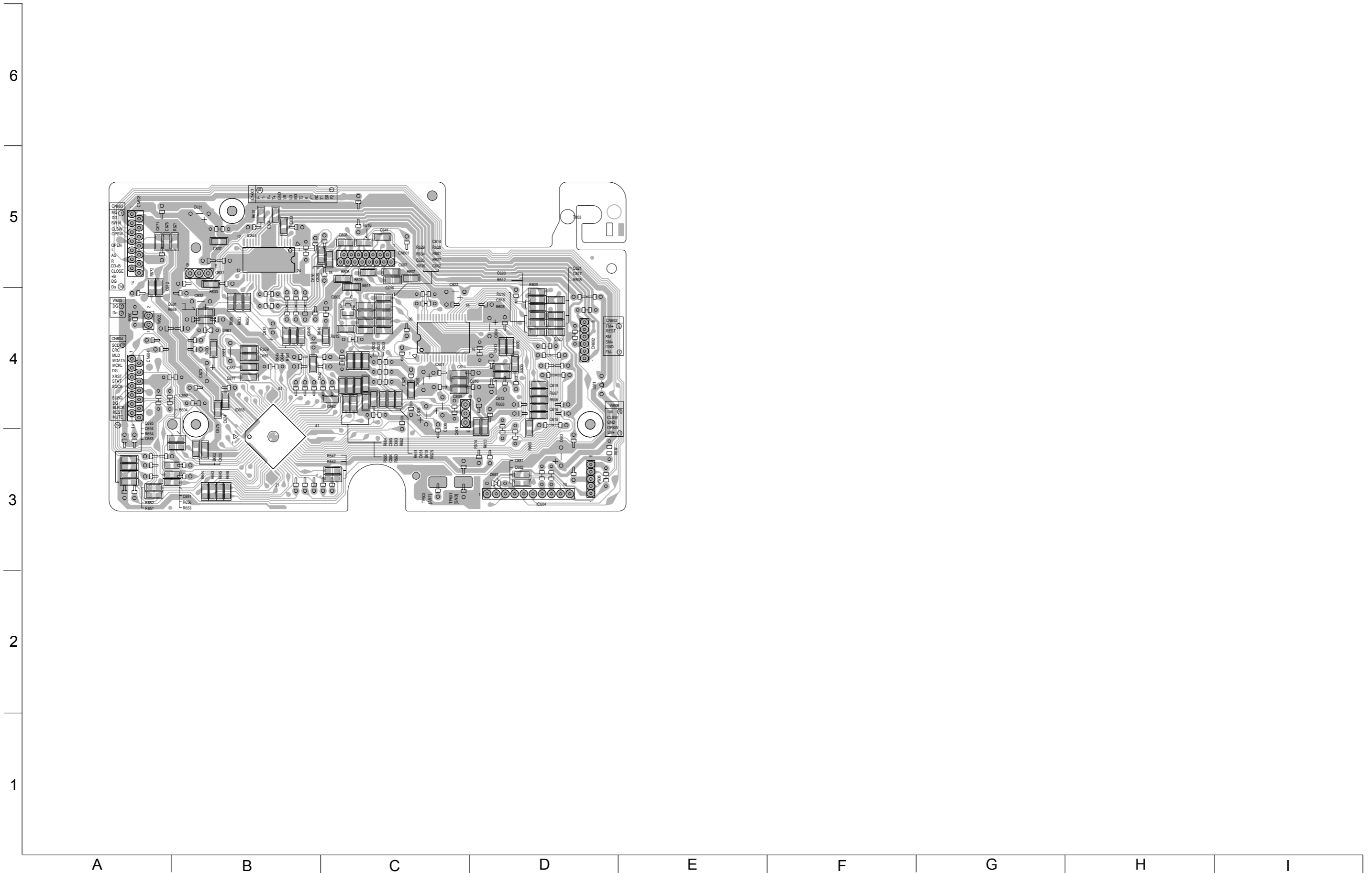
■ Power amplifier & control & AC jack board



MD servo control board



■ CD servo control board



<<MEMO>>